



VetX DR4343

Fast and perfect Images

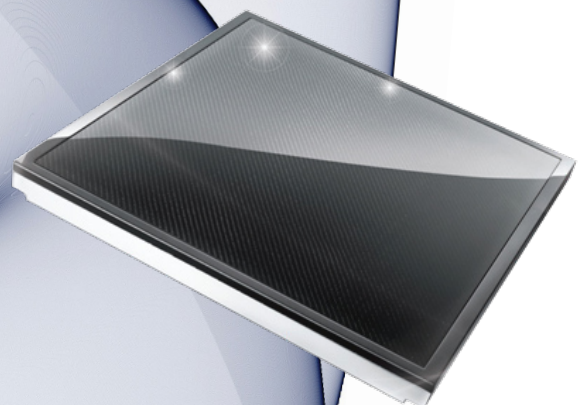
The in-house x-ray DR-system can be integrated into any existing cassette-tray environment. Our in-house DR-system is specifically designed for application in small-animal practices. It acquires your x-ray images in seconds and, using a Gigabit Ethernet Interface, transfers them to your display in less than 2 seconds.

Its outstanding sensitivity allows for excellent image quality at 143 micron resolution. The silicone plate-technology is less susceptible to temperature, humidity and shock, making it the perfect solution for small-animal practices and hospitals.

The system is perfectly adapted to the patients' different sizes and species. Among its unique features are specific vet-filters for e.g. dogs, cats, horses, small animals and a lots of exotic animals that can be adjusted to perfectly match your needs.

The easy to use and fast application empowers users with a complete workflow from patient admission to creation of the x-ray task, the image preview to process view on to further diagnostics - everything on just one work station.

The acquired x-ray images, stored in a central data base, are available for processing with image management systems (PACS). Communication features interfacing with patient management systems (HIS, RIS, etc) are integrated as well.



Winden 26, 85304 Ilmmünster
Germany

eMail info@xray-is.de fon +49 8441 / 479 229-3 (Sales)
support@xray-is.de +49 8441 / 479 229-2 (Support)

internet www.xray-is.de fax +49 8441 / 479 229-9

Diagnostic Software

The ease of use and, above all, the perfect adjustment to daily routines in a veterinary practice of our software is well-known.

The software has been designed for the specific needs of veterinary requirements, and supports your every day image processing and findings perfectly. Our image-filters have been fine-tuned and optimized for the veterinary market; moreover, on installation, they are adjusted to your specific wishes and your x-ray generator in particular, of course. There is a difference to others - flexibility helps us, and You, to keep the edge!

The Diagnostic Workstation has been sold 9000 times in ca. 67 countries for some reason.



Your dealer:

SYSTEM BENEFITS

- Panel 17 x 17' (43 x 43 cm)
- Extremely high image
- Highest dynamic (16 bit raw data)
- Fit and forget
- User-friendly
- High scan/processing speed

SOFTWARE HIGHLIGHTS

Input screen specifically designed for veterinary application - GDT-interface to PMS-systems (e.g. VetInf) - direct image acquisition from various modalities such as ultrasound, endoscopy, CT, etc - image processing filters specifically designed for veterinary application - special gray-scale look-up-tables (LUTs) for equine x-ray imaging - measurement-tools e.g. hip dysplasia (dogs) - CT-Series 3D-Imaging - PACS-Interface and DICOM-Print, DICOM-Email, DICOM-Worklist, etc - additional network-workstations (viewer) - individual filter adjustments (via sliders) Currently the VetX Diagnostic Workstation is available in the following languages: German, English, French, Italian, Polish, Russian, Spanish and Chinese

SYSTEM FEATURES

- DR-Panel 17 x 17' (43 x 43 cm)
- Business-PC, 23" TFT-Display, HDD 1TB, Ram 4GB, USB2.0, Win.7 Pro. - VetX Diagnostic Workstation Standard, Patient-CD Interface (connect) to DR-Panel incl. special Vet-Filter
- Installation & configuration, Hardware-briefing
- Training on VetX Diagnostic Workstation (ca. 2 hrs)
- Panel to be fit into existing x-ray-table
- incl. trigger for sync. of x-ray generator and panel
- 1 year warranty on panel or according to manufacturer's warranty!
- Dimensions (W/D/H) / Weight:
System package 50x50x4.5 cm / ca. 13kg

DR-PANEL TECHNICAL DATA

Pixel size	143µm
Active pixel area	3000 x 3000mm
AD converter	14 bit, 16384 gray scales
Resolution	3.5 lp/mm
HR-image display	ca. 2 seconds

OPTIONAL

X-Ray Table incl. Generator

